

CASE STUDY

Valero Energy Oil Refinery

Valero acquired the Pembroke refinery in South West Wales in 2011, marking Valero's entry into the European refining market. Opened in 1964, the refinery is one of the largest, most complex refineries in Western Europe. It makes products including gasoline, diesel fuel, kerosene, liquefied petroleum gas (LPG) and petrochemical feed stocks.

Within the refinery, scaffolding is used to provide access for preventative and reactive maintenance, inspection and operational tasks. For the last 30 years this has been provided by an outsourced scaffolding company, and with rising labor costs continues to account for an ever-increasing expense year on year for Valero.

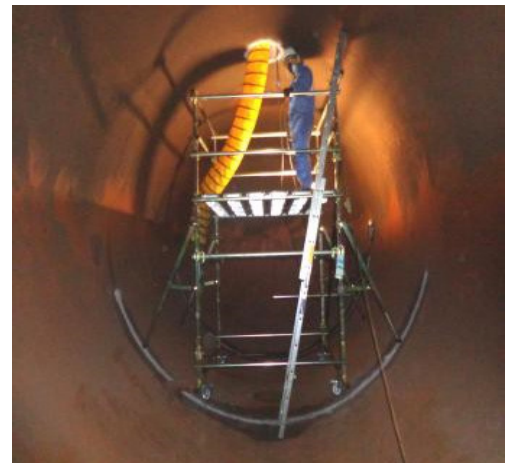
This has driven the site Refinery Services Department to completely review the scaffold and access requirements to identify safe and suitable lower cost alternative solutions to traditional scaffolding. During this research, the LOBO System was identified and a sample order, together with the approved training package, was purchased. Having received the LOBO System pilot order in 2013, a focus was placed to use it on all works, excluding the very high designed access applications.

VESSEL INTERNAL WORK

The plan was to use the LOBO System for many of the jobs on routine maintenance that require working at height; it was estimated that as much as 75% of works needed a platform height of 6 meters or below. Other products or scaffolding would be used for the residual high applications.

ROUTINE MAINTENANCE ACCESS

The LOBO System can be assembled without the use of any tools in minutes, safely and to any shape or size and is not reliant on the scaffolding company to return and remove the systems after the maintenance task has been completed, which can increase hire costs. Valero continues to use a number of different access systems for maintenance around the Pembroke Refinery site. Scaffolding costs alone at Pembroke, are in the region of \$300k (R 5 045 240) a month and Valero has identified significant benefits in deploying the LOBO System since they first purchased in 2013.



For any additional assistance please contact our Work At Height Specialists.

Tel: 011 453 7374 | Email: sales@workatheights.co.za | Website: www.protekta.co.za
Address: Unit 19, Eden Crossing Business Park, Herman St, Meadowdale, Edenvale, 1609



CASE STUDY

Valero Energy Oil Refinery

CONCLUSION - COST SAVING

In 2014 the LOBO System was used for around 8% of the applications, this increased to 15% by 2015, 20% by 2016, 25% by 2017, 40% by 2018 and 45% by 2019.

Annual Scaffolding Spend \$3,600,000 (R60 Million)	Percentage of Jobs Performed by LOBO	Annual Spend On LOBO		Annual Saving	
		IN DOLLARS	IN RANDS	IN DOLLARS	IN RANDS
2014 Actual	8%	\$ 170,000.00	R 2 853 195.00	\$ 288,000.00	R 4 831 289.00
2015 Actual	15%	\$ 30,000.00	R 503 505.00	\$ 540,000.00	R 9 058 667.00
2016 Actual	20%	\$ 23,000.00	R 385 984.00	\$ 720,000.00	R 12 079 804.00
2017 Actual	25%	\$ 43,000.00	R 721 622.00	\$ 900,000.00	R 15 099 755.00
2018 Actual	40%	\$ 81,000.00	R 1 359 335.00	\$ 1,440,000.00	R 24 157 263.00
2019 Actual	45%	\$ 39,000.00	R 654 403.00	\$ 1,620,000.00	R 27 176 921.00
TOTAL 5 YEAR SPEND/SAVING		\$ 386,000.00	R 6 478 044.00	\$ 5,508,000.00	R 92 403 699.00

Official figures approved by Valero Energy, Pembroke UK, total spend on LOBO Systems around \$386,000.00

As can be seen by the figures, well over \$1,500,000 (R43 000 000.00) of scaffolding costs were saved in the initial 3 year period from 2014 to 2016. With over \$5,500,000 (R61 800 000.00) saved in the 6 year period to 2020.

Significant cost savings have been made at the refinery in terms of labor cost as well as the reduction of maintenance down time.

In house maintenance crews can assemble the system quickly and safely around, under or above plant, even in restricted areas. Maintenance tasks can be better controlled and out sourced scaffolding labor costs can be significantly reduced without compromising safety.

- Online product demonstration available.
- Full certified onsite training.
- Technical support and assessments.

Conformities

EU: BS EN1004:2004 BS 1139 parts 3 & 4, C & E
 USA: OSHA Compliant, ANSI A10.8, 29 CFR Part 1920 (General Industry)
 Canada: CAN/CSA Z797-09
 Australia: AS/NZS 1576.1:2010 and AS/NZS 1576.3:2015 Tower

For any additional assistance please contact our Work At Height Specialists.

Tel: 011 453 7374 | Email: sales@workatheights.co.za | Website: www.protekta.co.za
 Address: Unit 19, Eden Crossing Business Park, Herman St, Meadowdale, Edenvale, 1609

